

GPS-110

The GPS-110 is a reliable computation unit with two GPS receivers and RS422 interface for measuring the position and velocity in orbit. The fully redundant GPS receivers are able to work independently with two active GPS antennas and provide one position and velocity update per second.



Figure 1 - GPS-110

CHARACTERISTICS	
Operation voltage	12 V ± 1V
Power consumption	300 mW (both GPS receivers switched off) 3 W (both GPS receivers switched on)
Position accuracy	< 10 m
Velocity accuracy	0.1 m/s
Timing accuracy	20 ns
Orbital operation	Yes
Time to First Fix	40 seconds (cold start)
GNSS	GPS only, Galileo and others on demand
Main Interface	RS422
Mass	285 g ± 5g
Dimension	91 x 84 x 41 mm
Operational temperature range	-40°C to +85°C
Export restriction	EU dual use, ITAR free

Table 1 – Key specifications

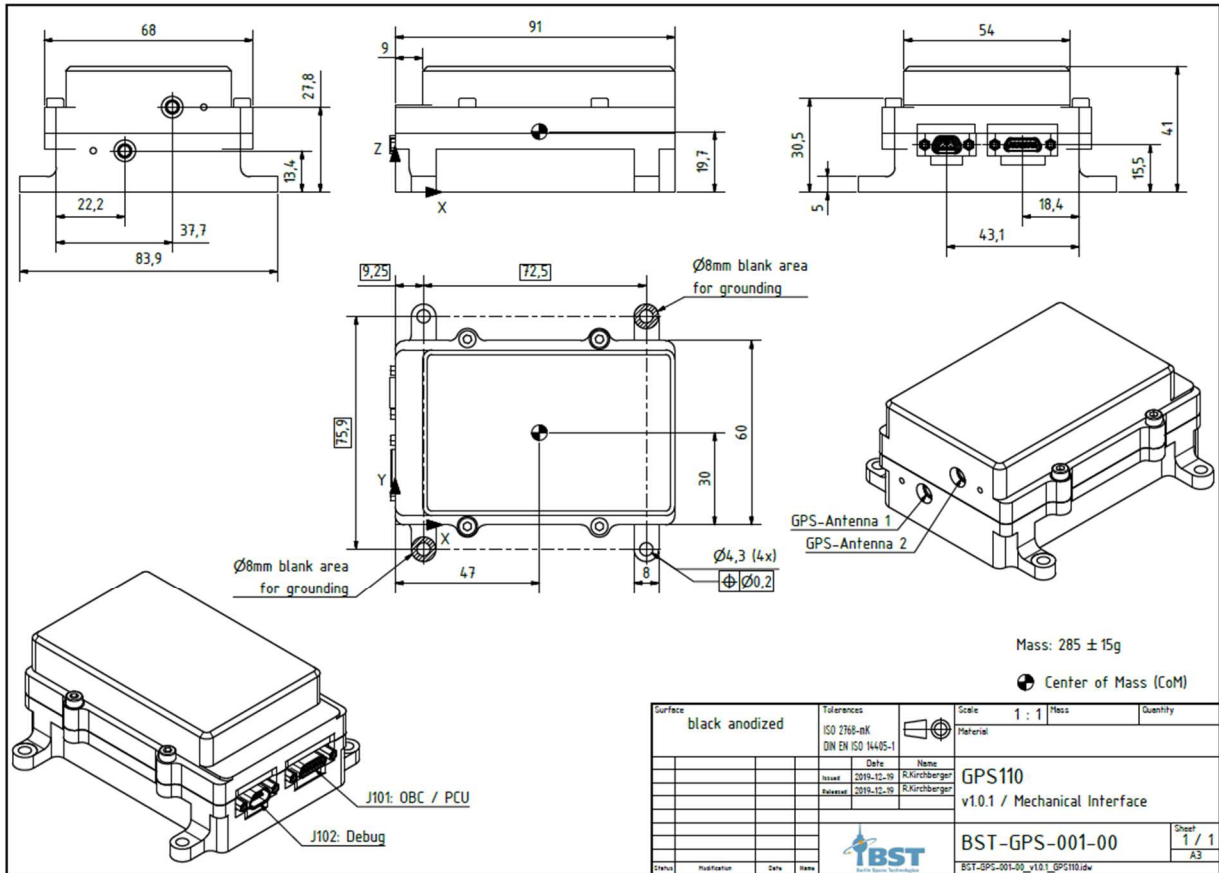


Figure 2 - Mechanical interface